

ICM – Internationales Congress Center München

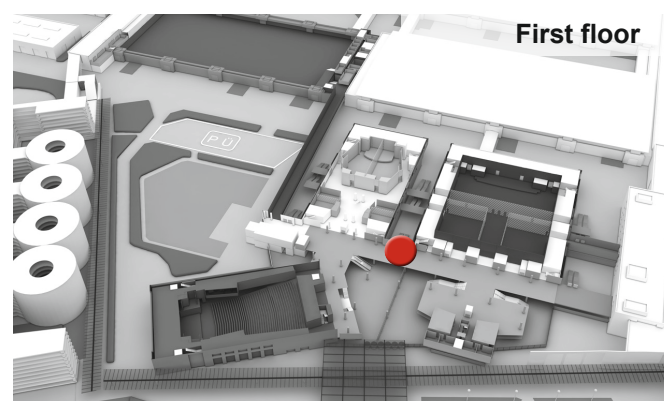
DETAILS FOYER FIRST FLOOR

including technical specifications

Areas/rooms	Area in m ²
Foyer First Floor	2,850 (North: 1.367, South: 1.483)

Communicative Heart with a Sophisticated Atmosphere

The striking stairway to the first floor leads to a bright, spacious upstairs foyer with 2,850 m² of space which, due to its layout and the materials used, has a very inviting character. It is ideal for exhibitions, large banquet events and as a meeting point, bar or rest area. The charming architecture and central location of the upstairs foyer make it extremely versatile.

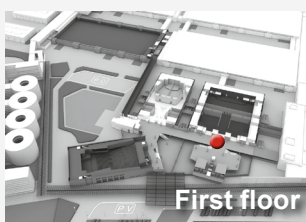
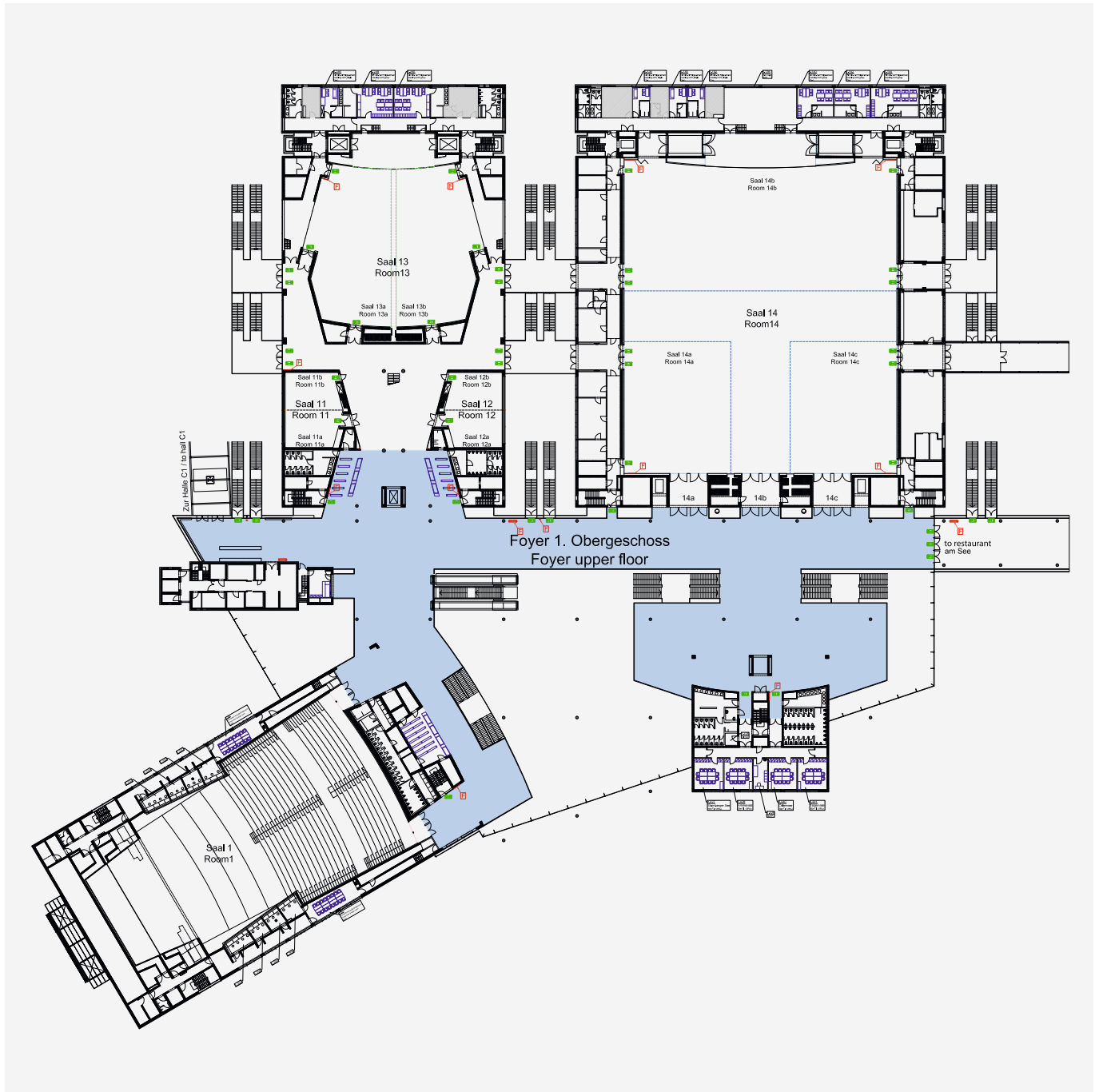




Specifications

Location	<ul style="list-style-type: none"> No vehicles in foyer itself The maximum load-bearing capacities of the passenger and freight elevators must be observed at all times Passenger elevators may not be used to transport freight
Suitable for	<ul style="list-style-type: none"> Exhibitions, catering
Size/capacity	
Special features	<ul style="list-style-type: none"> Daylight/shade system Parquet floors Useable exhibition space: max. approx. 1,500 m² Maximum structure height: 2.80 m - 3.70 m, depending on stand location Walls: Stuccolustro wall paneling Permissible floor load: 500 kg/m² (5 kN/m²)
Structural details	<ul style="list-style-type: none"> Suspension points in foyer: none Entrance gates, size: max. 3 m wide x 4 m high via north foyer/ground floor Entrance gates, number: 1 via north foyer, gate 21 / ground floor)
Utilities	<ul style="list-style-type: none"> Ventilation systems: partially air-conditioned Utility ducts: none, grid of recessed floor outlets Water: not available Waste water: not available Compressed air: not available Electricity: max. 40 kW (63 A CEE per connection) System telecom connections: telephone/fax analog External telecom connections: ISDN, T-DSL 1000/2000 Network: Ethernet/RJ-45 static IP Cable TV connections: Digital broadband network (DVB-C)

ICM – Internationales Congress Center München

OVERVIEW FOYER FIRST FLOOR



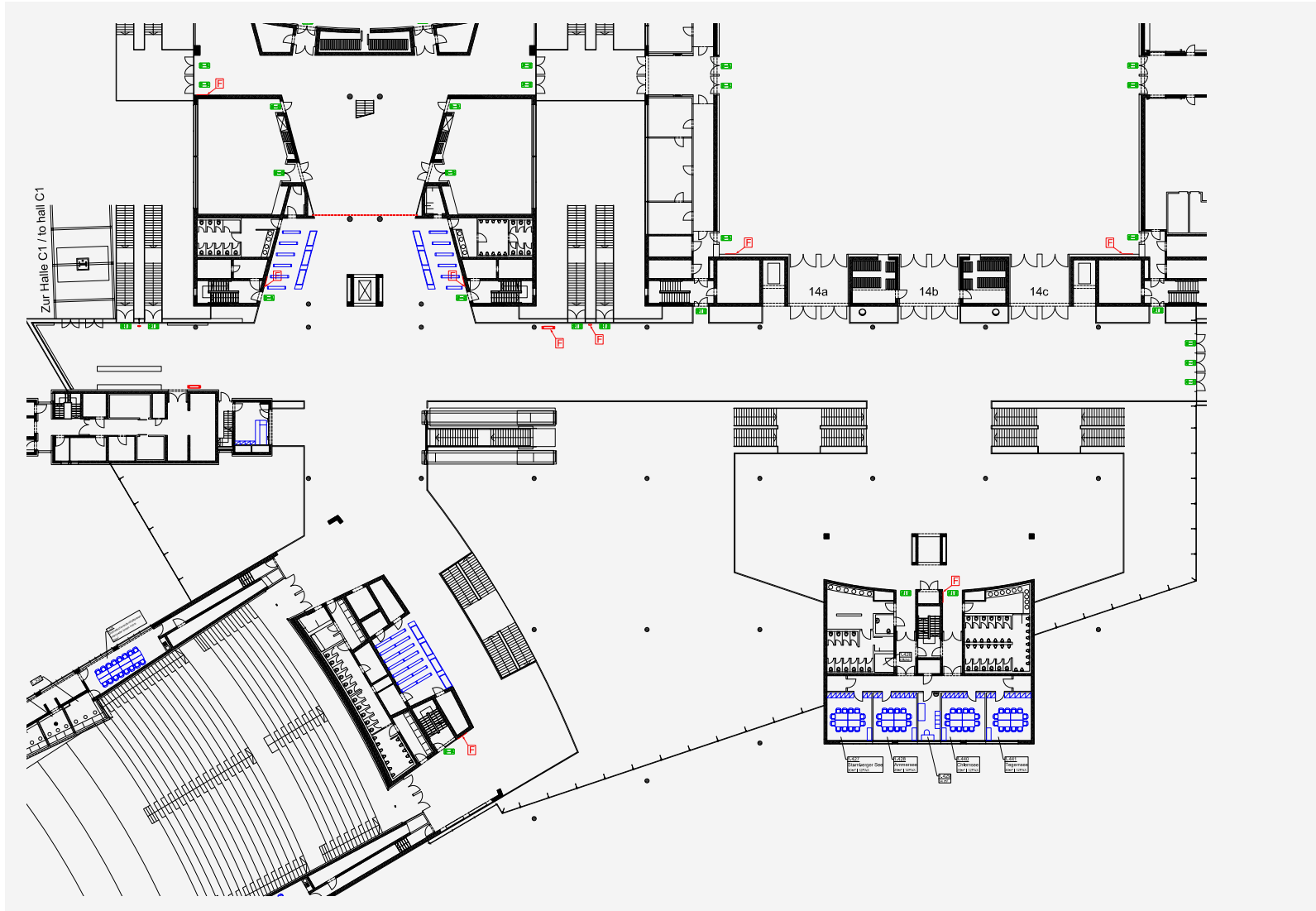
-  Extinguisher
-  Escape route

Area in m²

2,850 (North: 1,367, South: 1,483)

ICM – Internationales Congress Center München

FOYER FRIST FLOOR: EMPTY

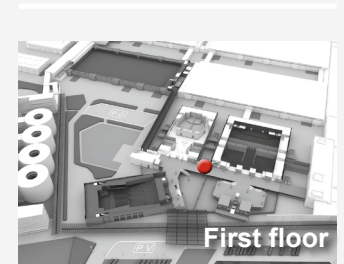




Area in m²

2,850

Exhibition Terms and Conditions:

- Exhibition layout with sufficient emergency aisles between the hatched areas
- Corridors at least every 10 meters and at least 2 meters wide
- Fire extinguishing equipment and emergency escape routes must be kept clear at all times, even during setup and dismantling
- Dimensions must be independently verified on location



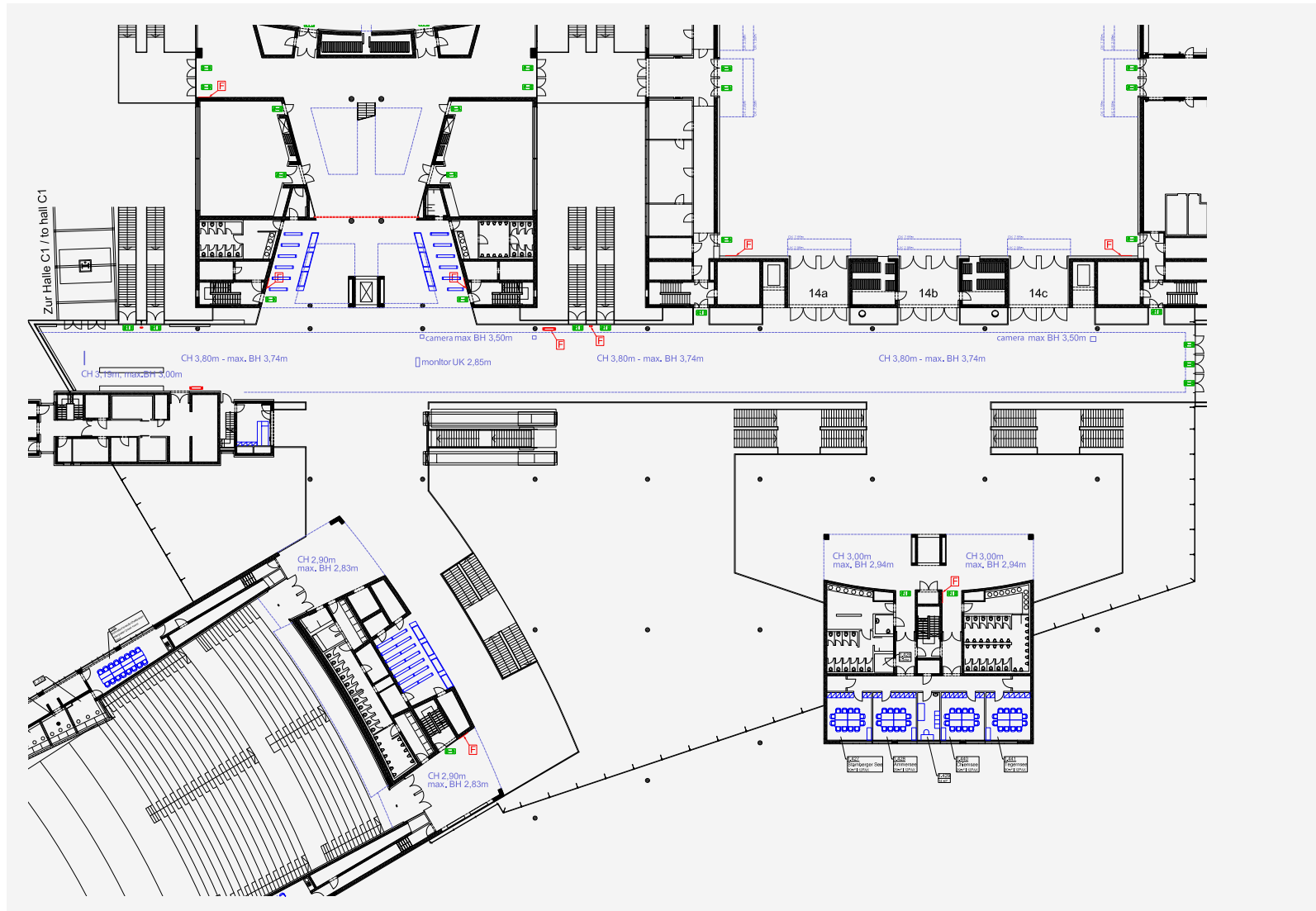
Extinguisher 
 Escape route 

Last update: 01.08.2012

Disclosure to third parties only permitted with written authorization. All specifications must be independently verified on location!

ICM – Internationales Congress Center München

FOYER FIRST FLOOR: EMPTY INCL. BUILDING HEIGHT

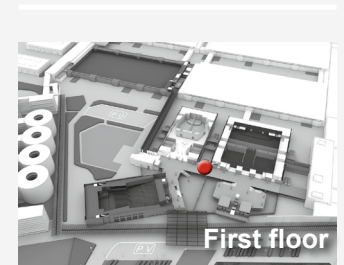



Area in m²

2,850

Exhibition Terms and Conditions:

- Exhibition layout with sufficient emergency aisles between the hatched areas
- Corridors at least every 10 meters and at least 2 meters wide
- Fire extinguishing equipment and emergency escape routes must be kept clear at all times, even during setup and dismantling
- Dimensions must be independently verified on location



Extinguisher 
Escape route 

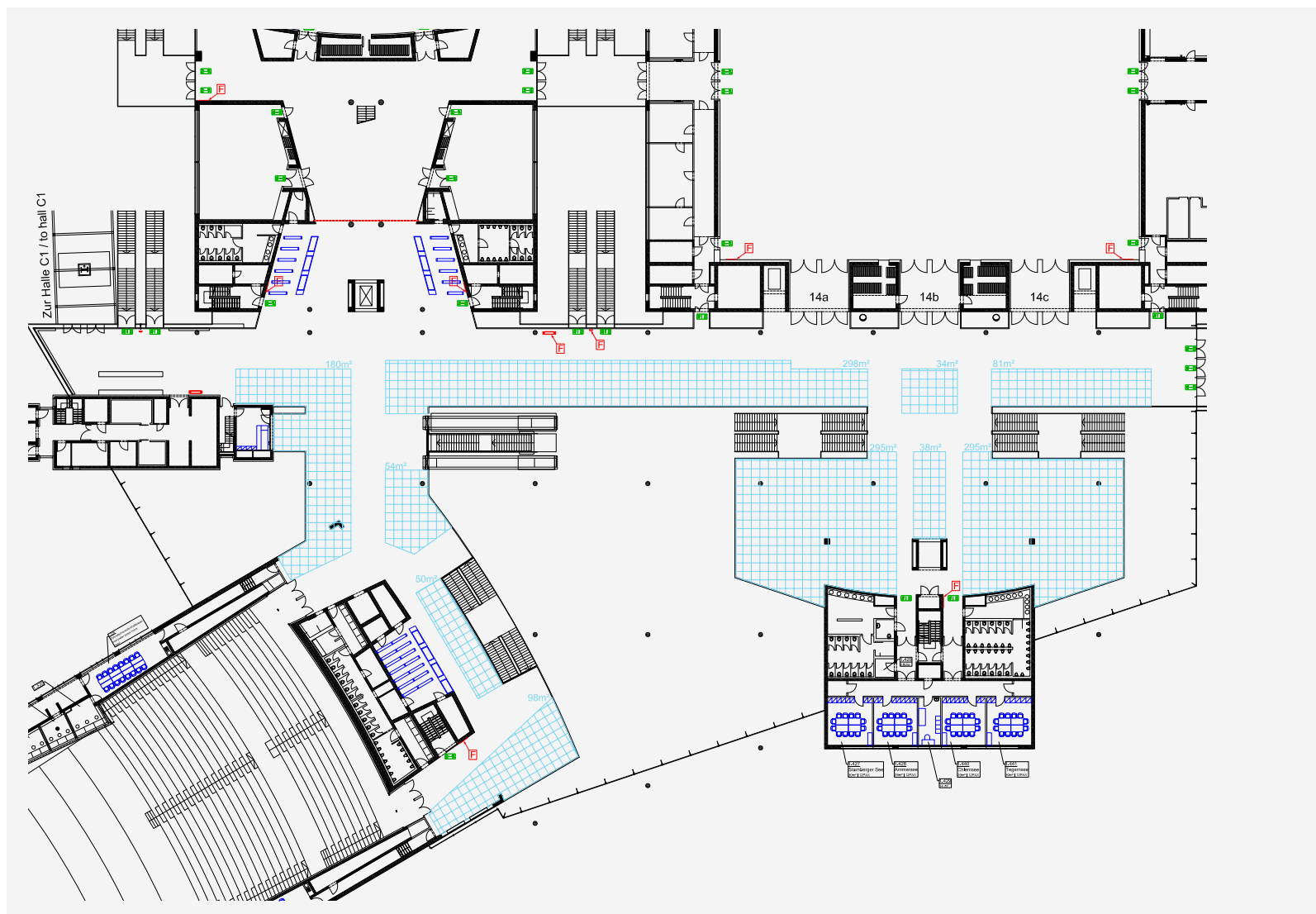
Last update: 01.08.2012

Disclosure to third parties only permitted with written authorization. All specifications must be independently verified on location!



ICM – Internationales Congress Center München

FOYER FIRST FLOOR: OPTION 1

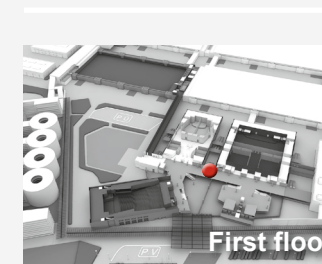



Area in m²

1,423

Exhibition Terms and Conditions:

- Exhibition layout with sufficient emergency aisles between the hatched areas
- Corridors at least every 10 meters and at least 2 meters wide
- Fire extinguishing equipment and emergency escape routes must be kept clear at all times, even during setup and dismantling
- Dimensions must be independently verified on location



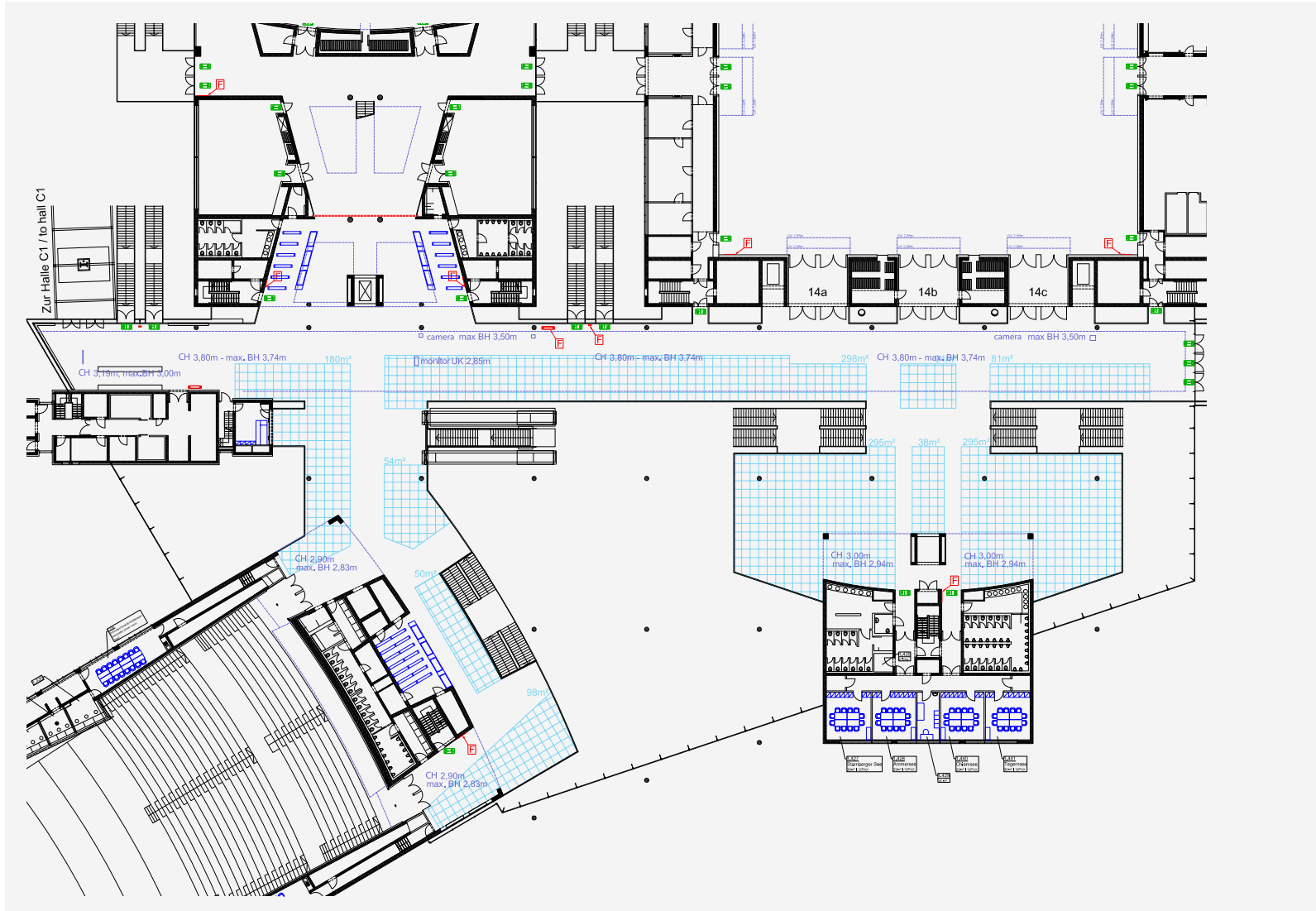
Extinguisher 
Escape route 

Last update: 01.08.2012

Disclosure to third parties only permitted with written authorization. All specifications must be independently verified on location!

ICM – Internationales Congress Center München

FOYER FIRST FLOOR: OPTION 1 INCL. BUILDING HEIGHT

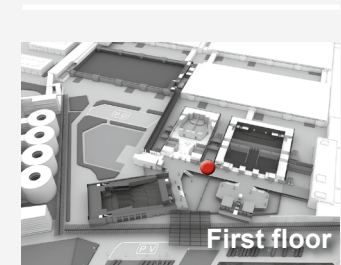




Area in m²

1,423

Exhibition Terms and Conditions:

- Exhibition layout with sufficient emergency aisles between the hatched areas
- Corridors at least every 10 meters and at least 2 meters wide
- Fire extinguishing equipment and emergency escape routes must be kept clear at all times, even during setup and dismantling
- Dimensions must be independently verified on location







Extinguisher 
Escape route 

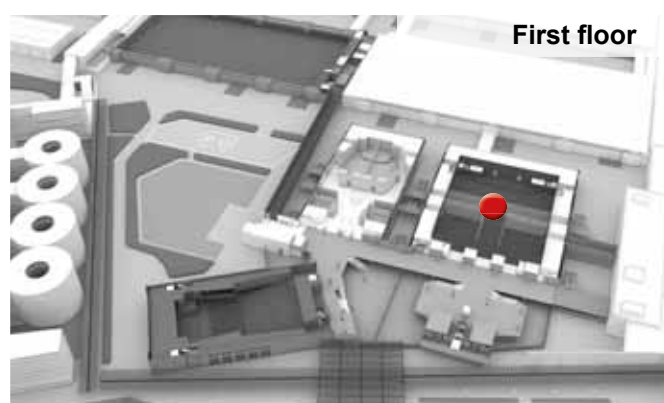
Last update: 01.08.2012

Disclosure to third parties only permitted with written authorization. All specifications must be independently verified on location!

DETAILS ROOM 14

including technical specifications and seating variants

Areas/rooms	Area in m ²	 Theater	 Classroom	 Banquet	 Beer fest
Room 14	2,730	3,026	1,464	1,500	1,592
Room 14a	450	473 or 455	220	320 or 240	-
Room 14c	450	473 or 455	220	320 or 240	-
Room 14b large	1,565	1,518	784 or 736	826	-
Room 14b small	1,120	1,042	524 or 496	558	-



Room 14: Multitalent for international Events

Our multi-functional room 14 can accommodate up to 3,032 seats in 43 rows. It is equipped with state-of-the-art technology and features interpreters' booths, control booths and movie screens. Six moveable lighting grids permit sophisticated lighting effects in all areas. Six skylights let daylight into the large room, which can also be completely darkened. The ceiling height is an impressive 9.50 meters. Due to partition walls, room 14 can be divided into three smaller soundproof rooms, making it ideal for conventions, shows, presentations and gala events.

Room 14a and 14c: Perfect for events with around 470 guests

The two rooms 14a and 14c, each with 450 m², offer a capacity of 473 theater style seats, 220 classroom-style seats and 240 seats in banquet format. Both rooms receive natural light through skylights and can be completely darkened. These rooms offer ideal conditions for presentations, meetings or conferences with up to 473 guests.

Room 14b large: Perfect for Event Productions with up to 1,578 Guests

In its large version, room 14b provides 1,565 m² with a capacity of 1,578 people in theater seating, 784 seats in classroom style seating or 790 seats in banquet form. The room receives natural light through four skylights and can be completely darkened as needed. This room is particularly suitable for conventions, product launches, shows and events with up to 1,578 guests.

Room 14b small: Perfect for Events with around 470 Guests

The smaller version of room 14b with 1,120 m² provides you a capacity of 1,032 row seats, 524 classroom style seats or 558 seats in banquet layout. The room receives natural light through four skylights and can be completely darkened if needed. This room is ideal for conferences, product launches, shows and events with up to 1,032 guests.

ICM – Internationales Congress Center München

DETAILS ROOM 14



Specifications	
Location	<ul style="list-style-type: none"> Deliveries via two elevators (length 6.10 m, width 3.20 m, height 2.50 m, max. 4000 kg) next to stage Elevators loaded at ground level (behind hall B0) and lower level (tunnel) Elevators stop at room level and stage level
Suitable for	<ul style="list-style-type: none"> Room 14 and 14b: Conventions, shows, gala events, product presentations, events Room 14a and 14c: Lecture events, presentations, meetings, conferences
Size/capacity	<ul style="list-style-type: none"> Room 14: 2,730 m², seats 3,032 people in theater seating, 1,464 people with classroom seating, 1,500 people with banquet seating Room 14a and 14c: 450 m² each; each room seat 473 people in theater seating, 220 people with classroom seating, 240 people with banquet seating Room 14b (large): 1,565 m², seats 1,578 people in theater seating, 784 people with classroom seating, 790 people with banquet seating Room 14b (small): 1,120 m², seats 1,032 people in theater seating, 524 people with classroom seating, 558 people with banquet seating
Special features	<ul style="list-style-type: none"> Daylight through 6 skylights that can be completely darkened (4 skylights in room 14b large, 3 skylights in room 14b small), can be completely darkened Room height: 9.50 m Color of room: Traffic blue (RAL 5017) Room 14 and 14b: Performer dressing rooms: 3 group dressing rooms, 3 private dressing rooms Room 14a and 14c: No fixed stage Permissible floor load: 500 kg/m² (5 kN/m²)
Room partitions	<ul style="list-style-type: none"> Room 14 can be partitioned into up to three smaller rooms. Ceiling-high partitions make the smaller rooms soundproof. Partitions that are not in use disappear into special storage compartments.
Stage (Room 14 and 14b)	<ul style="list-style-type: none"> The front edge of the stage is slightly curved (r = 151 m). If additional platforms are used to extend the stage, the front edge can also be „straightened“. This extends the depth of the stage by one meter in the middle. Proscenium panels can also be used to reduce the width of the stage. Fixed stage, 123 m² in size Stage width: 19.90 m Stage depth: 6.20 m (can be increased to 9.20 m with retractable platforms) Platform height: 1.20 m Clearance height on stage: 7.00 m The height of the retractable platforms can be adjusted between 0.80 and 1.20 m

Specifications

Stage stairway
(Room 14 and 14b)

- A stage stairway that spans the width of the entire stage (19.90 m) can also be added. It consists of 7 elements that can be set up at a height of 120 cm, 100 cm or 80 cm. Each element is 2.88 m long and curved to fit the front edge of the stage. The elements can also be set up on top of one another to create a long stairway into the stage. Each step is equipped with fluorescent lamps (red, green, blue) which can be used to create any color

Curtain
(Room 14 and 14b)

- The performance curtain is a traveler curtain (opens to the sides) made of stage velour that is the same color as the room. Various legs and borders made of black stage velour are also available

Overhead machinery
(Room 14 and 14b)

Stage:

- 3 machine hoists: 500 kg/hoist (length 18.20 m, 60 mm pipe)
- 3 lighting hoists: 500 kg/hoist (length 18.20 m, 60 mm pipe)
- 12 chain hoists: 500 kg/hoist (in accordance with BGV C1) arranged on 3 rails, can be positioned using motors

Room:

24 chain hoist:

- 500 kg/hoist (in accordance with BGV C1), can be positioned on a rail system above the room ceiling. The chains are lowered into the room through grommets. The chain hoists themselves can not be moved during scenery changes. Sixteen (16) mobile 1000-Kg BGV D8 rigging chain hoists can also be installed (max. 500 Kg per point)

6 lighting bridges (4 in room 14b large and 3 in room 14b small):

- Each installed in the skylights
- Max. traverse: approx. 12 m, memory function to save positions
- Working load: 250 kg/m²

3 gondola hoists:

- Installed in front lighting bridges (e.g. for video projectors)
- 250 kg/winch

Overhead machinery
(Room 14a and 14c)

Chain hoists:

- 500 kg/hoist (in accordance with BGV C1), can be fixed to a series of rails above the ceiling. The chains are lowered into the room through grommets.

1 lighting bridge per room:

- Installed in skylight
- Max. traverse: approx. 12 m, memory function to save positions
- Working load: 250 kg/m²

Specifications

Screens/projection	<ul style="list-style-type: none">■ The room is equipped with a total of three screens for front projection. A truss with a retractable screen is installed on stage that can be positioned at any depth on stage. The screen has a visible projection area of 16.30 m x 6.50 m. There are two retractable screens for partitioned rooms 14a and 14c, each with a visible projection area of 8,00 m x 9,60 m. Upon request, additional portable screens in various sizes (4.80 m x 6.20 m, 3.00 m x 4.00 m for front and rear projection) are also available. A rear-projection booth is located on the back wall of the stage where video projectors can be installed if needed. Direct connections to the stage and to the video control console are available. Additional portable screens for front and rear projection are also available and can be hoisted using trusses
Control booths	<ul style="list-style-type: none">■ Three control booths, i.e. for audio, video and lighting, are located at the back of the room. When the room is partitioned, the audio control booth is in room 14a, and the lighting control booth is in room 14c. Depending on technical requirements, the control booth in each room can be controlled from the other control booth, or a mobile control panel can be installed. In any case, a mobile audio/lighting control panel is installed in room 14b.
Media equipment	<ul style="list-style-type: none">■ Room 14 (14a if partitioned) is equipped with a digital mixing console (Yamaha M7CL). This audio console is integrated into the in-house Rocknet (Riedel Communications). Room 14 can also be equipped with a portable digital mixing console (Yamaha PM5D with 52 channels). If the hall is partitioned, room 14c has a digital audio console (Yamaha LS9-16) that is also integrated into the in-house network.
Permanently installed media equipment	<ul style="list-style-type: none">■ Audio: CD, MC, MD, DAT, 12-channel UHF microphone system, interpreter's system, 12 interpreter's booths■ Video: S-VHS Rec., Betacam SP Rec.■ When the room is partitioned, permanently installed media equipment can be distributed between the partitioned rooms to meet the user's needs
PA system	<ul style="list-style-type: none">■ Room 14 and 14b: A line-source array (I-Acoustics KIVA) that suits the specific needs of the event in question can be used as a sound system in the hall■ Room 14a and 14c are equipped with a permanent NEXO public-address system (Nexo PS15)

Specifications

Lighting

- The room is equipped with a dimmable general lighting system with halogen downlights and fluorescent lamps. The stage lighting system is equipped with 2-kW and 5-kW dimmers. A variety of lamps (e.g. Fresnel-lens, profile and PAR spotlights) are available. Multifunctional spotlights and portable dimmers can be controlled via the existing DMX network. A Grand MA Fullsize (upon request, with a Grand MA Light is available as a backup console) is available as a lighting console. The room also has two permanently installed DMX 512 lines. Appropriate sockets are available at all important lighting positions. If necessary, network nodes (MA Lighting NSP) can be used to expand the channel capacity.

Permanent spotlight locations:

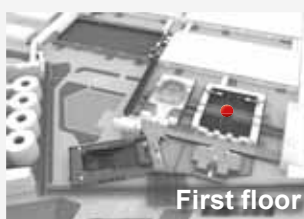
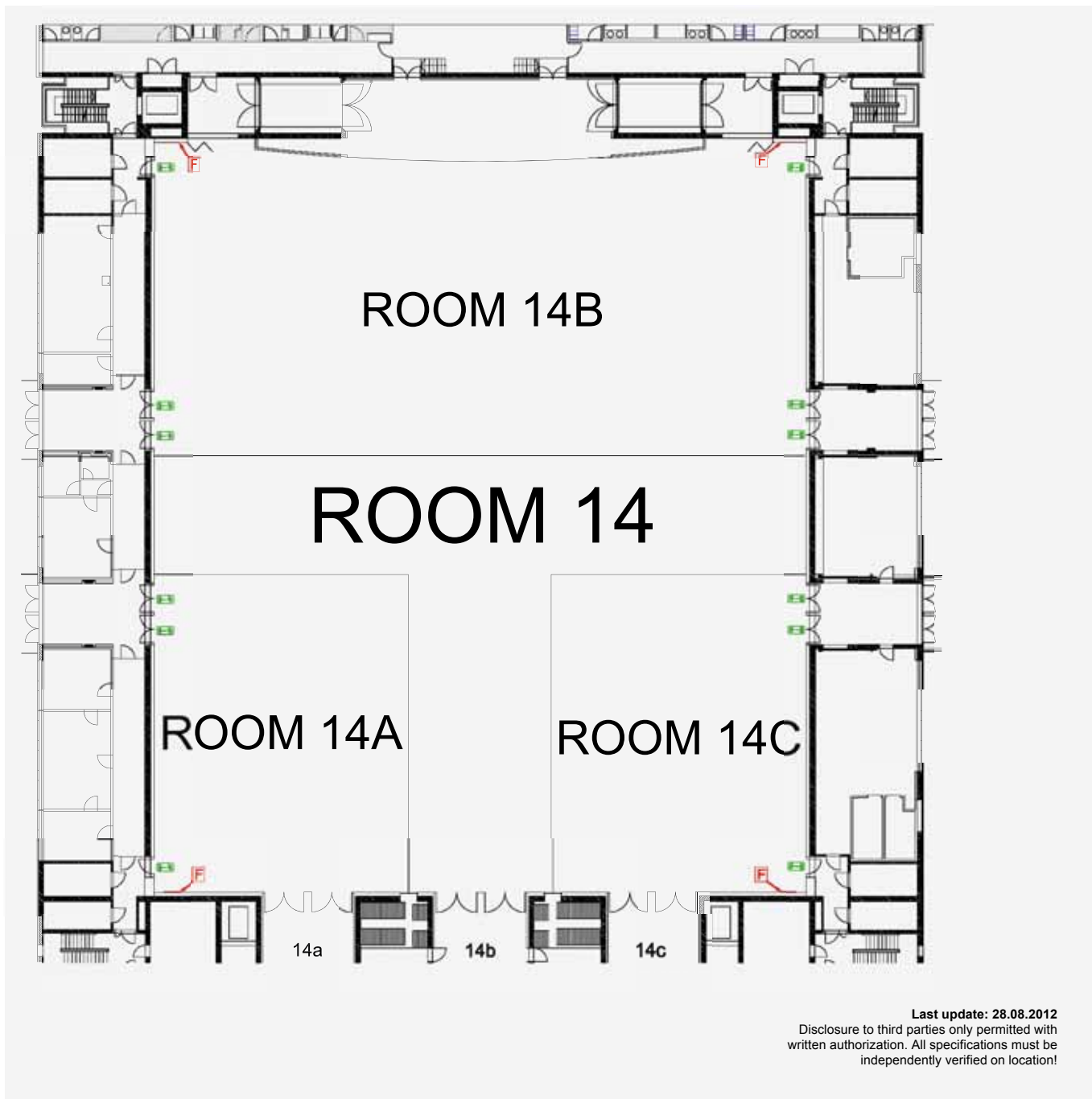
- 6 lighting bridges (room)
- 9 lighting stands on interpreter and control booths (room)
- Bridge scaffolding (stage)
- Gallery left and right (stage)
- 3 lighting hoists

Power supply

- Dimmers and moving light
- Two junction boxes are installed on the back wall of the stage for tour productions
- Total connected load: max. 125A each
- Connection type: open circuit, 125A CEE coupling
- Distributed to 63A CEE and 32A CEE
- Additional electrical connections can be provided upon request

ICM – Internationales Congress Center München

ROOM 14: EMPTY



- F Extinguisher
- E Escape route

Area in m ²
2,730